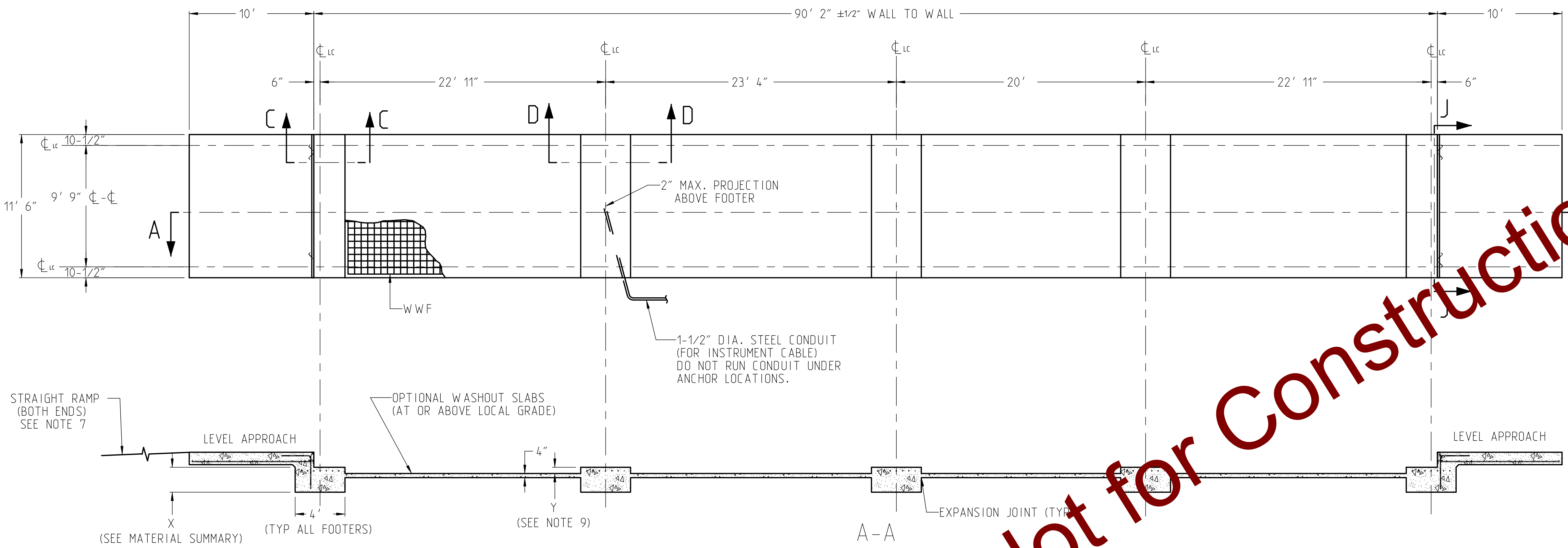


L1 IS GIVEN WITHOUT RISER BASEPLATES.
DIMENSION "B" AND WEIGHT WILL VARY WITH
THE HEIGHT OF RISERS USED, AS FOLLOWS:

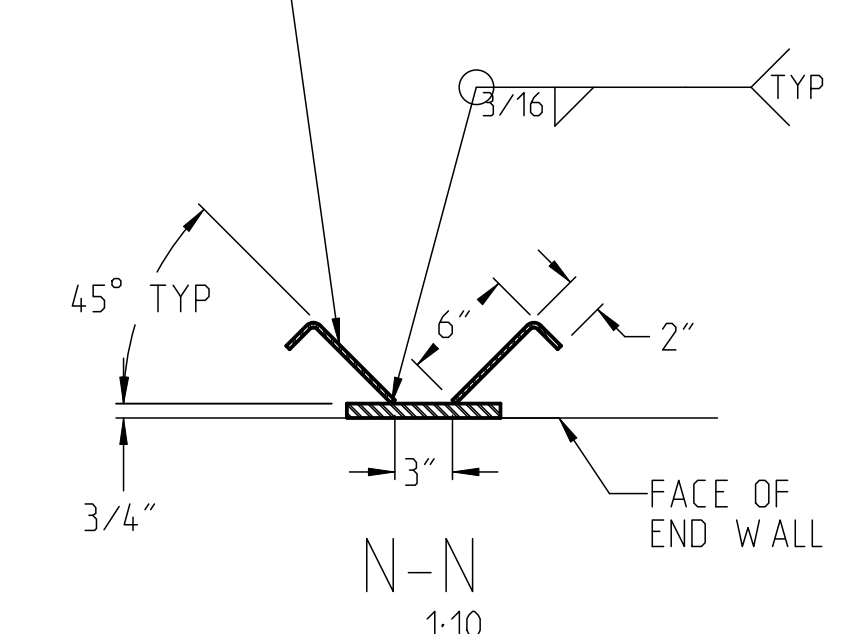
	L1-B	WGT
NO RISERS	32"	125
3" RISERS	35"	131
6" RISERS	38"	137

				TOTAL WEIGHT:			
ITEM	QTY	SYM	SIZE	DESCRIPTION	A	B	WEIGHT
5	24	L1	#5	APPROACH TO END TIES	28.00	32.00	1194
4	24	ST3	#5	APPROACHES, LONG.	114.00		238
3	20	ST2	#5	APPROACHES, LATERAL	132.00		230
2	2	ST2	#5	ENDS, LATERAL	132.00		23
1	35	ST1	#6	FOOTERS, LATERAL	132.00		579



MATERIAL SUMMARY*		FOOTER DEPTH: "X" INCHES (24 INCH MINIMUM)				
(INCLUDES FOOTERS & APPROACHES) (DOES NOT INCLUDE SCALE DECK)		24	36	48	60	72
CONCRETE (CU. YDS)		25.8	34.4	42.9	51.4	59.9

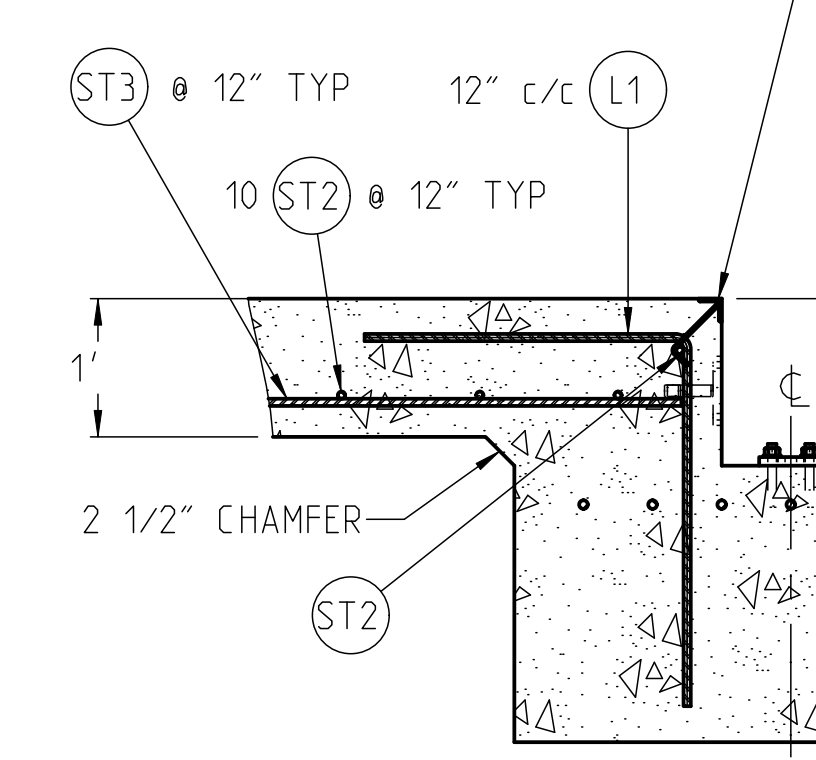
*IF OPTIONAL WASHOUT SLABS ARE USED, ADD:
841 SQ. FT. OF WWF: 6X6_W1.4XW1.4
10.4 CU. YD. OF CONCRETE



NOTES:

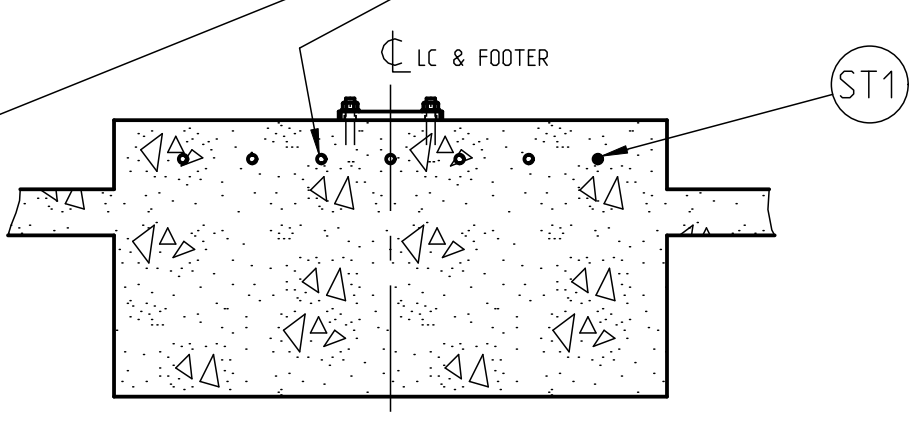
- FOUNDATION REQUIRES MINIMUM 3000 PSI STRENGTH CONCRETE AT 28 DAYS WITH 5-7% AIR ENTRAINMENT. SPECIFICATIONS FOR SCALE DECK CONCRETE ARE FOUND ON CORRESPONDING GENERAL LAYOUT DRAWING.
- USE MINIMUM 60KSI YIELD DEFORMED REINFORCING STEEL. REBAR MINIMUM DEPTH OF COVER SHOULD BE IN ACCORDANCE WITH THE LATEST ACI BUILDING CODE REQUIREMENTS FOR STRUCTURAL CONCRETE (ACI 318-SECTION 7.7) UNLESS OTHERWISE SPECIFIED.
- FOUNDATION REQUIRES 2500 PSF RATED SOIL FOR HIGHWAY TRUCK APPLICATIONS.
- TOP OF CONCRETE AT BASEPLATE LOCATIONS TO BE LEVEL AND IN ONE PLANE ±1/8"
- DIAGONAL MEASUREMENTS ENDWALL TO ENDWALL MUST BE EQUAL WITHIN 1/2".
- BASEPLATE ANCHORS TO BE SUPPLIED BY METTLER-TOLEDO. USE BASEPLATES AS TEMPLATES TO LOCATE ANCHORS DURING SCALE INSTALLATION.
- RAMP LENGTH: -PER LOCAL REGULATIONS
-1/2" SLOPE PER FOOT TYPICAL
- BOTTOM OF FOOTER MUST BE BELOW LOCAL FROSTLINE.
- FOOTER HEIGHT "Y" CAN BE VARIED TO SUIT LOCAL CLEARANCE REQUIREMENTS. TOP OF FOOTER AT GRADE LEVEL, I.E. FLUSH WITH WASHOUT SLABS, PROVIDES STANDARD 4" CLEARANCE BETWEEN BOTTOM OF WEIGHBRIDGE AND WASHOUT SLABS.
- OPTIONAL: 6" OF GRAVEL MAY BE USED UNDER APPROACHES TO IMPROVE DRAINAGE.
- CONTRACTOR SUPPLIES:
 - EXCAVATION
 - REINFORCING STEEL
 - CURB ANGLE ASSEMBLIES (SECT C-C)
 - CONCRETE AND FORMS
 - 1 1/2" DIA CONDUIT
 - BUMPER PLATE ASSEMBLIES (VIEWS J-J & N-N)

ANGLE 2 X 2 X 1/4 WITH ANCHOR HOOKS
(REF BUMPER PLATES) ON 12" c/c.



AT BASEPLATE LOCATIONS (SEE NOTE 4)
DIMENSION "H" = 14.5 + BASEPLATE RISER HEIGHT
THUS, NO RISER: H = 14.5 (AS SHOWN)
3" RISER: H = 17.5
6" RISER: H = 20.5

SPACE REBAR TO AVOID ANCHORS.
(TYPICAL ALL BASEPLATE LOCATIONS)



RECOMMENDED BUMPER PLATES (TWO EACH END)
MATERIAL: HR STEEL (BY OTHERS)

REV	ZONE	DESCRIPTION	BY	APPVD	AGENCY	E.R. NO.	DATE
CHG							

METTLER TOLEDO		MTMS	US-43229 Columbus OH	Drawn	Buchhop, Jacob	09-Jun-2020	Scale	1:60
Refer to protection notice ISO 16016 / Schutzvermerk ISO 16016 beachten		Change	-	Note	-	-	Format	ANSI D
Description		VTC25X FDN VF 90X11 W/RSR		No 61809824		ERP No		ERP Rev
Model: D000470123 Rev: B		Drawing: D000470123 Rev: B		Status: Approved		Units: INCH		1/1